

Barco portacontenedores

Tipo panamax

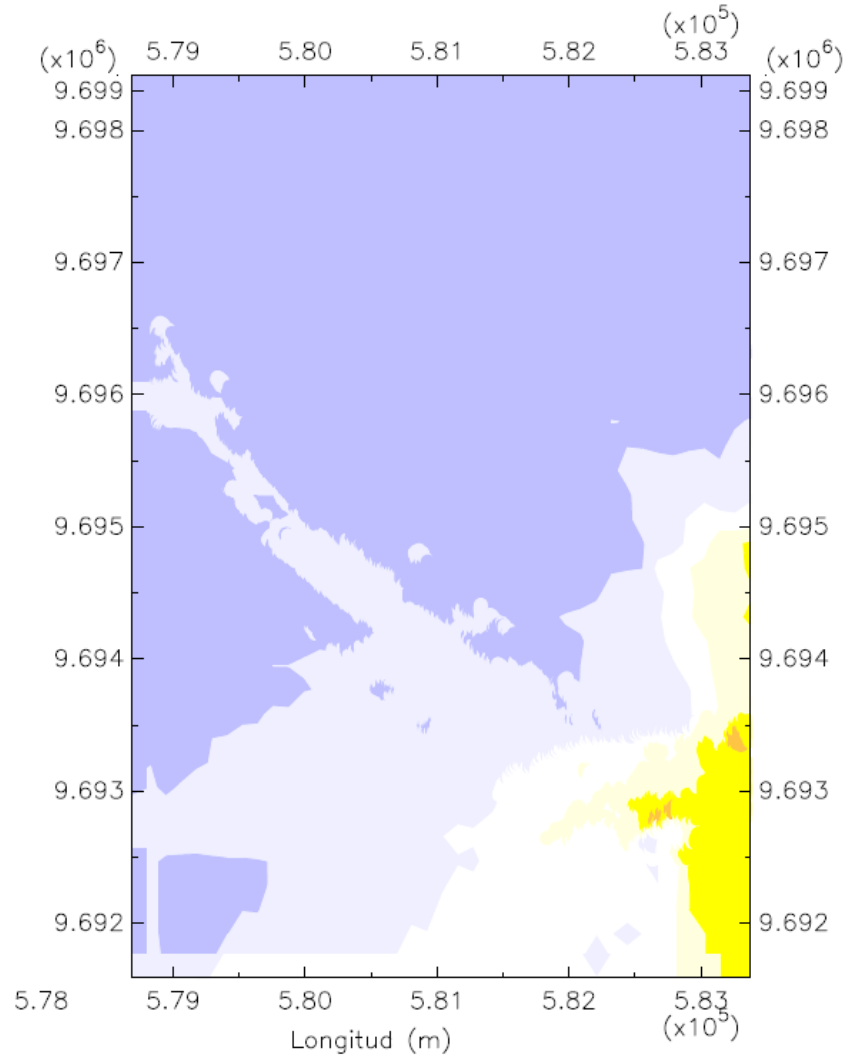
Eslora: 289 m

Manga: 32.20 m

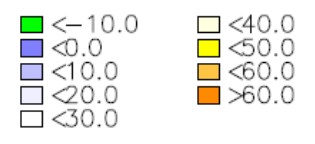
Calado: 11.60 m

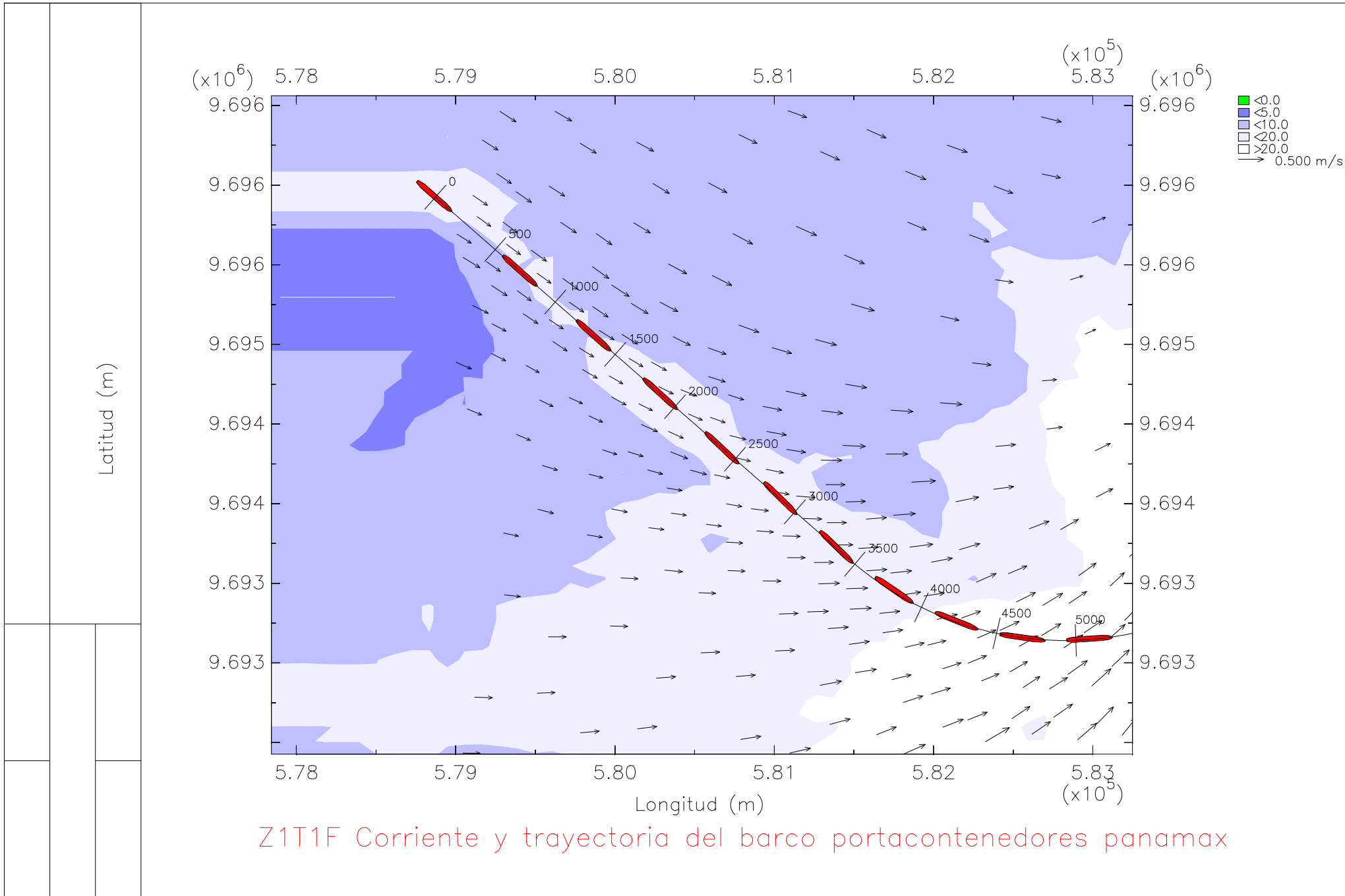
En la zona 1, tramo 1

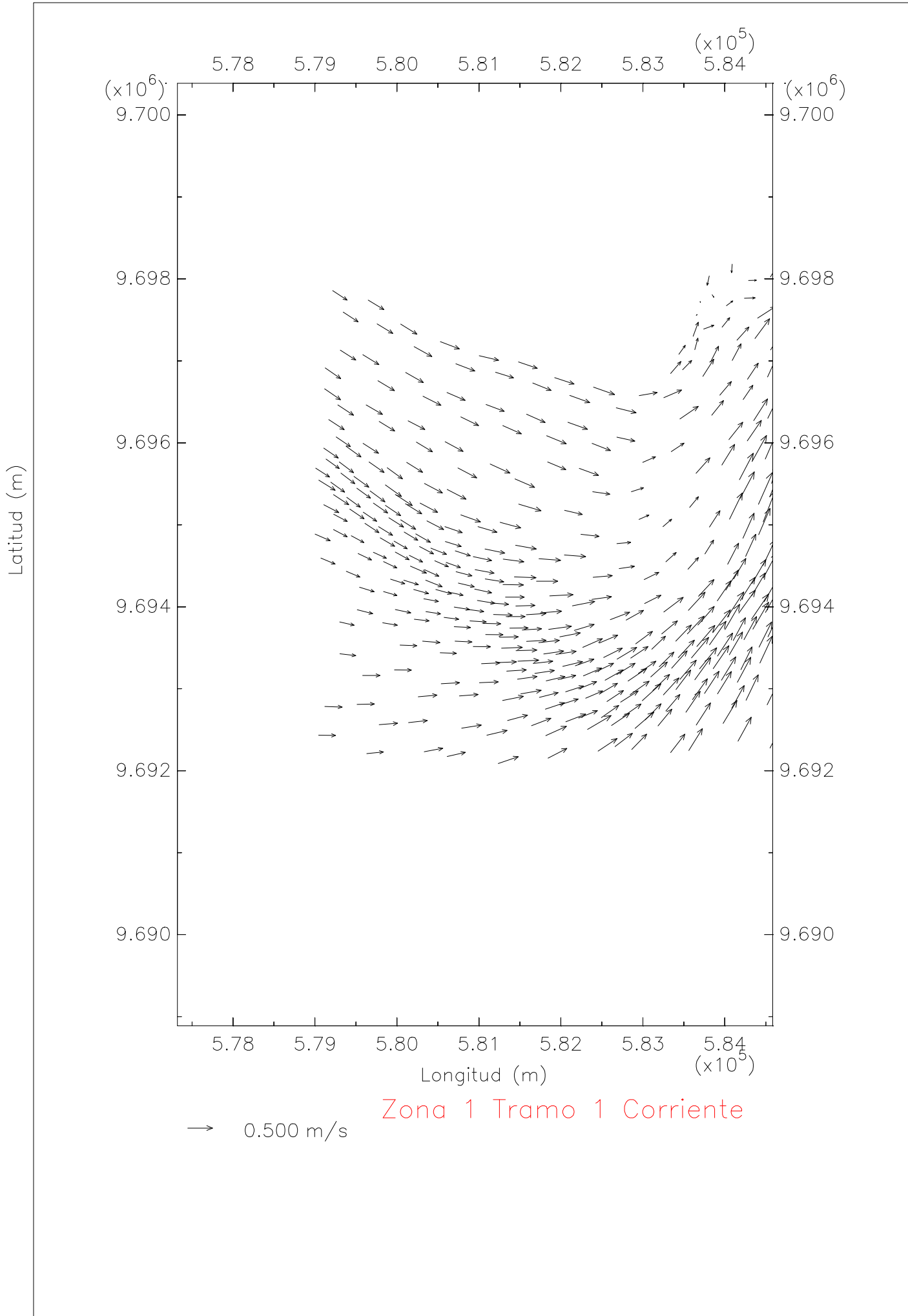
Bajo condiciones de oleaje y llenante

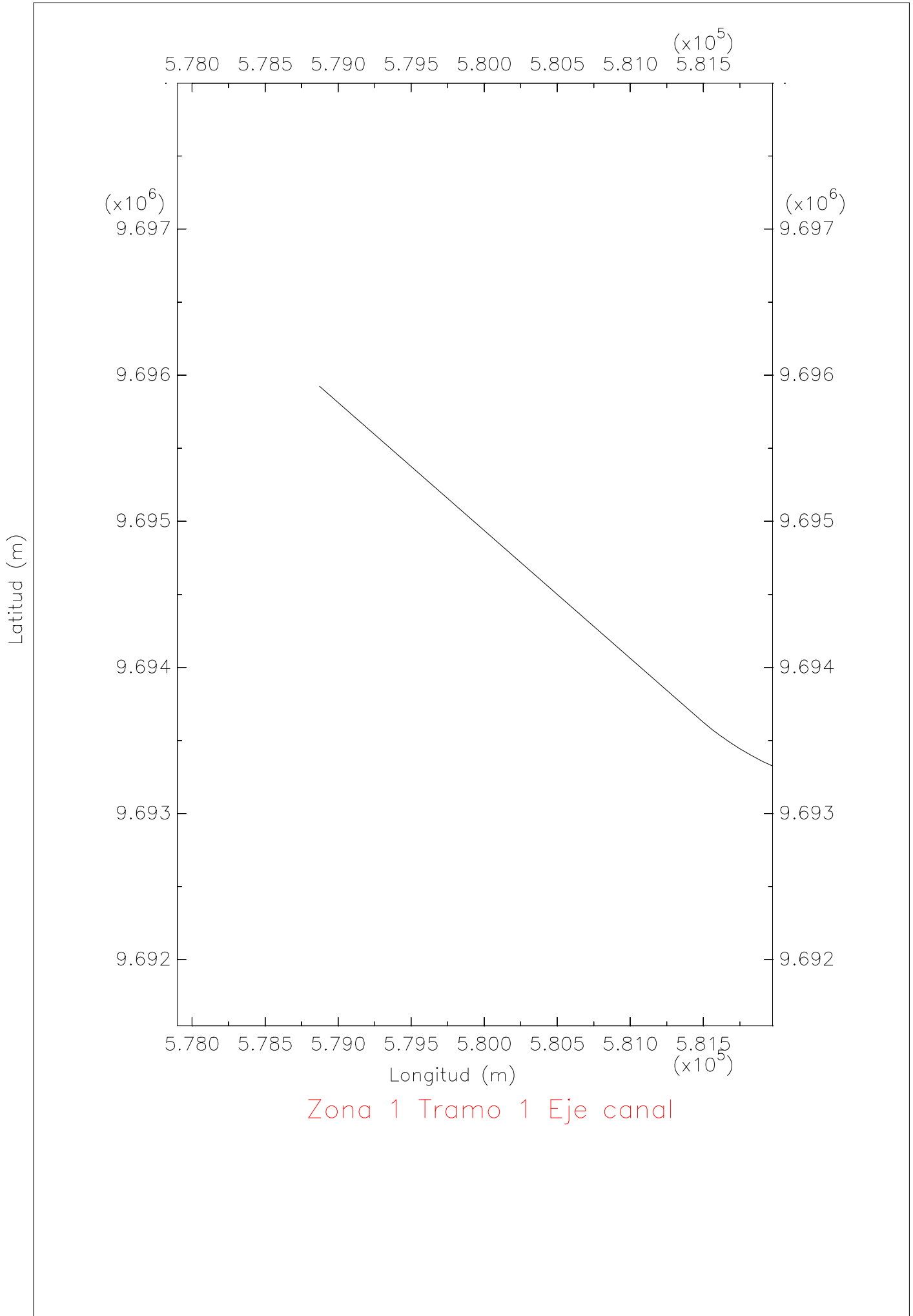


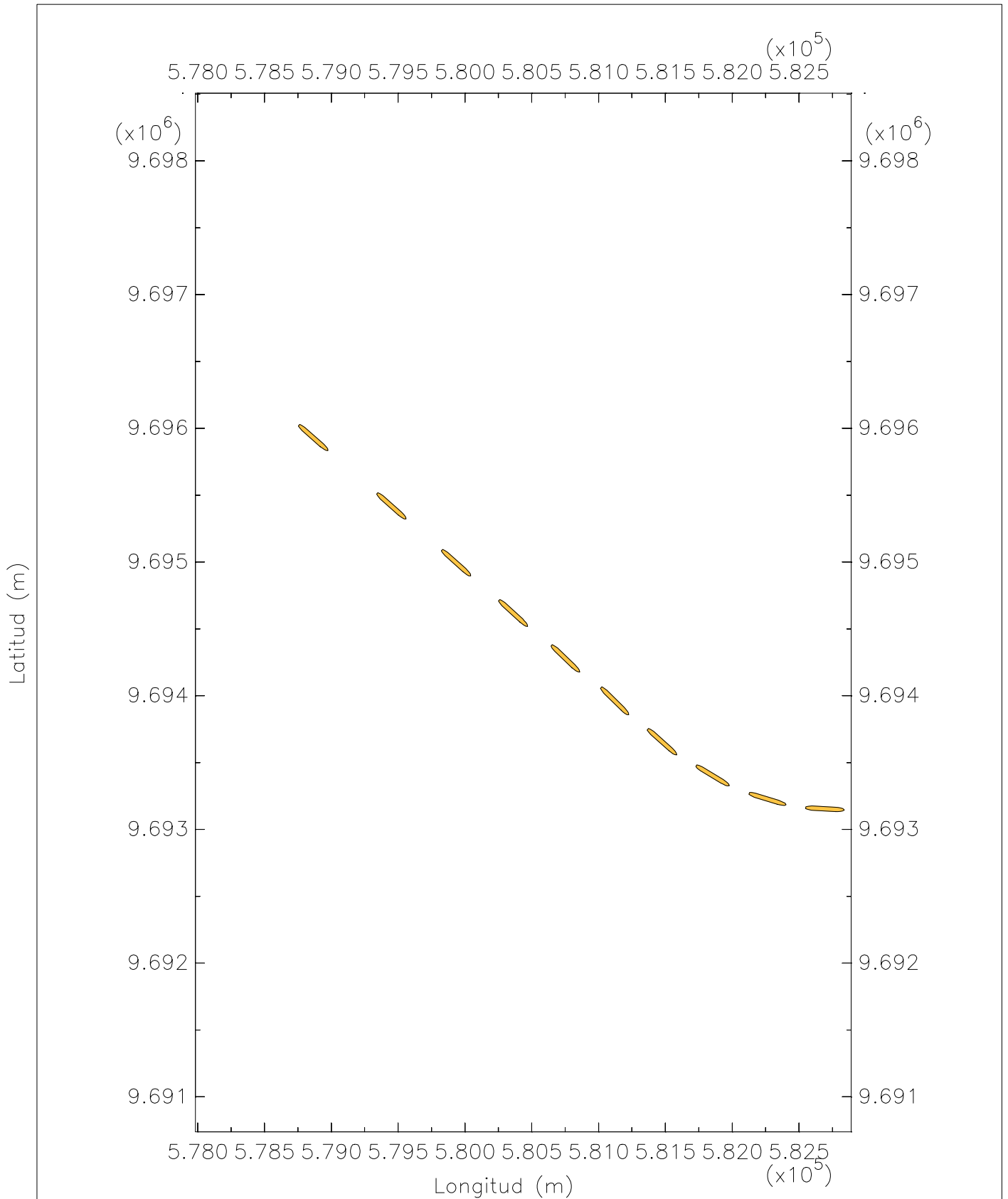
Zona 1 Tramo 1 Profundidad





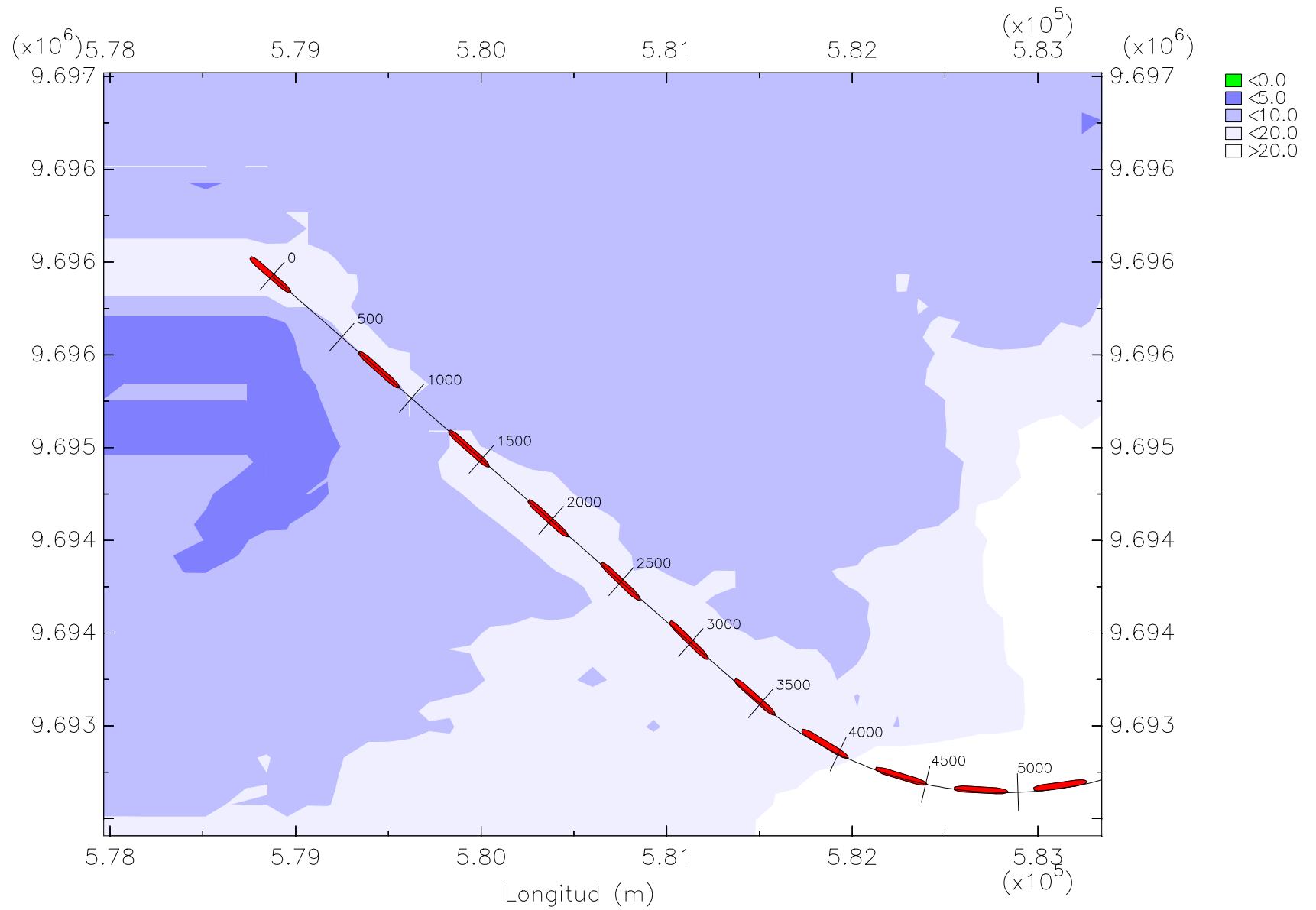




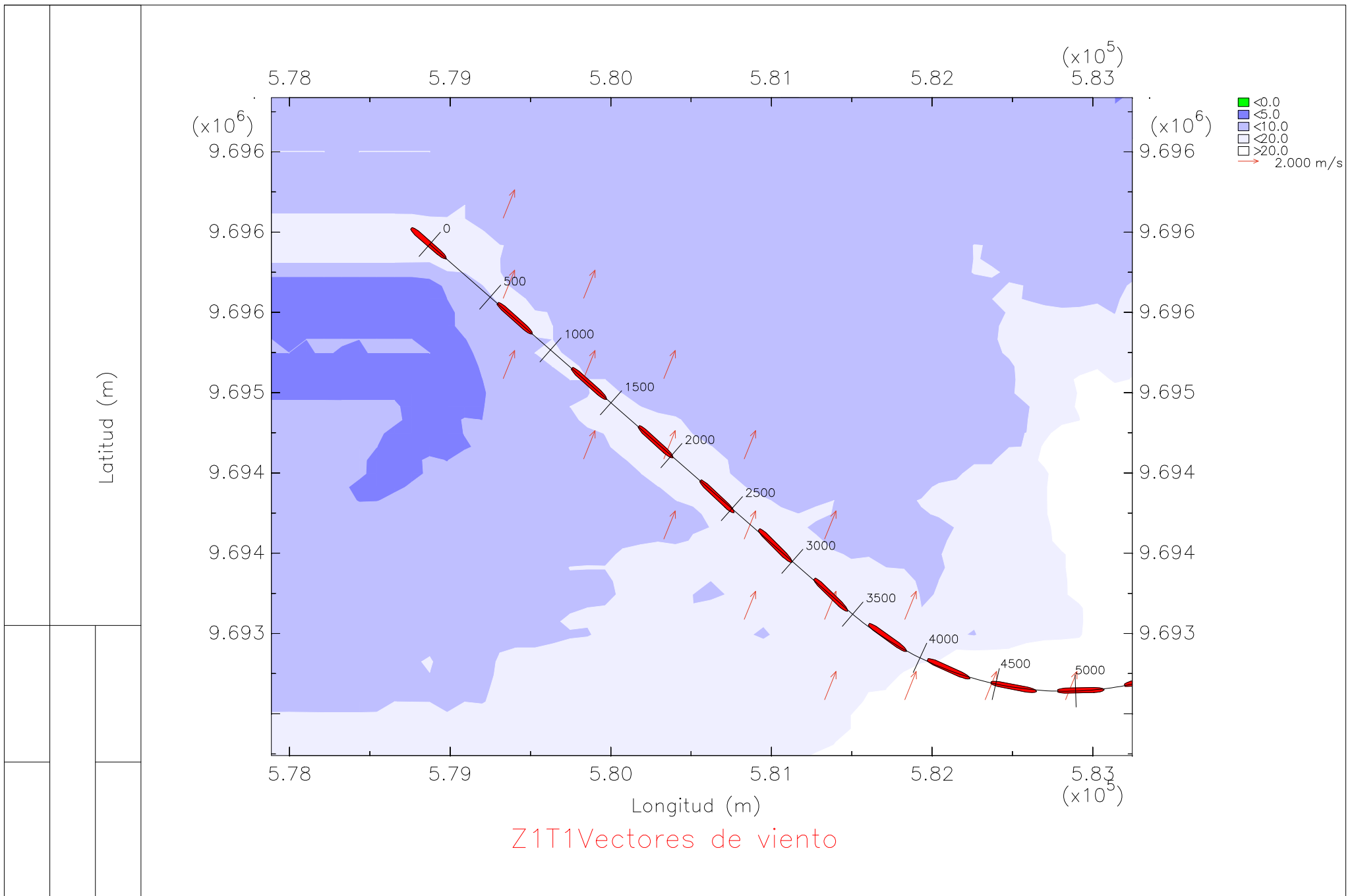


Z1FT1 Trayectoria del barco portacontenedores panamax

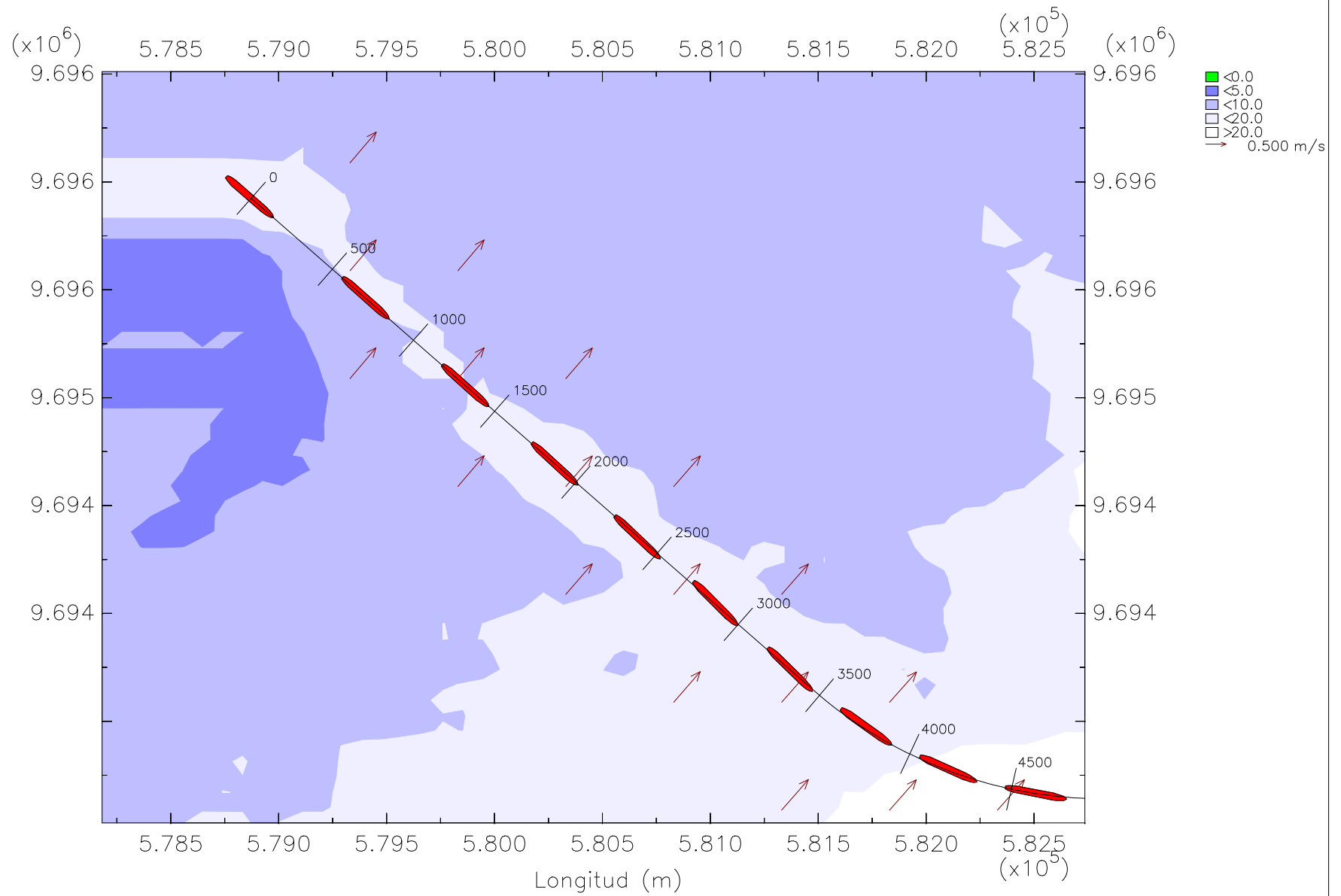
Latitud (m)



Z1T1 Trayectoria del barco portacontenedores panamax (oleaje y viento)



Latitud (m)



Z1T1 Vectores de oleaje